





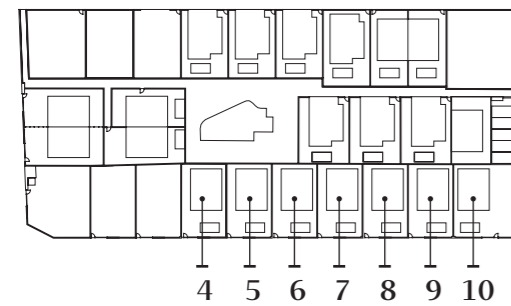
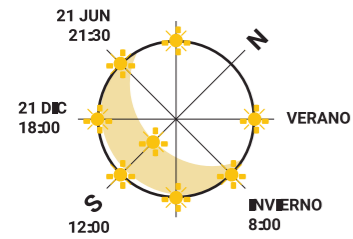
ILIOS Complex. Phase II

Model A (4 to 10).

	3		2		
Built surface	83,95	Terraces	40,30		

Built areas

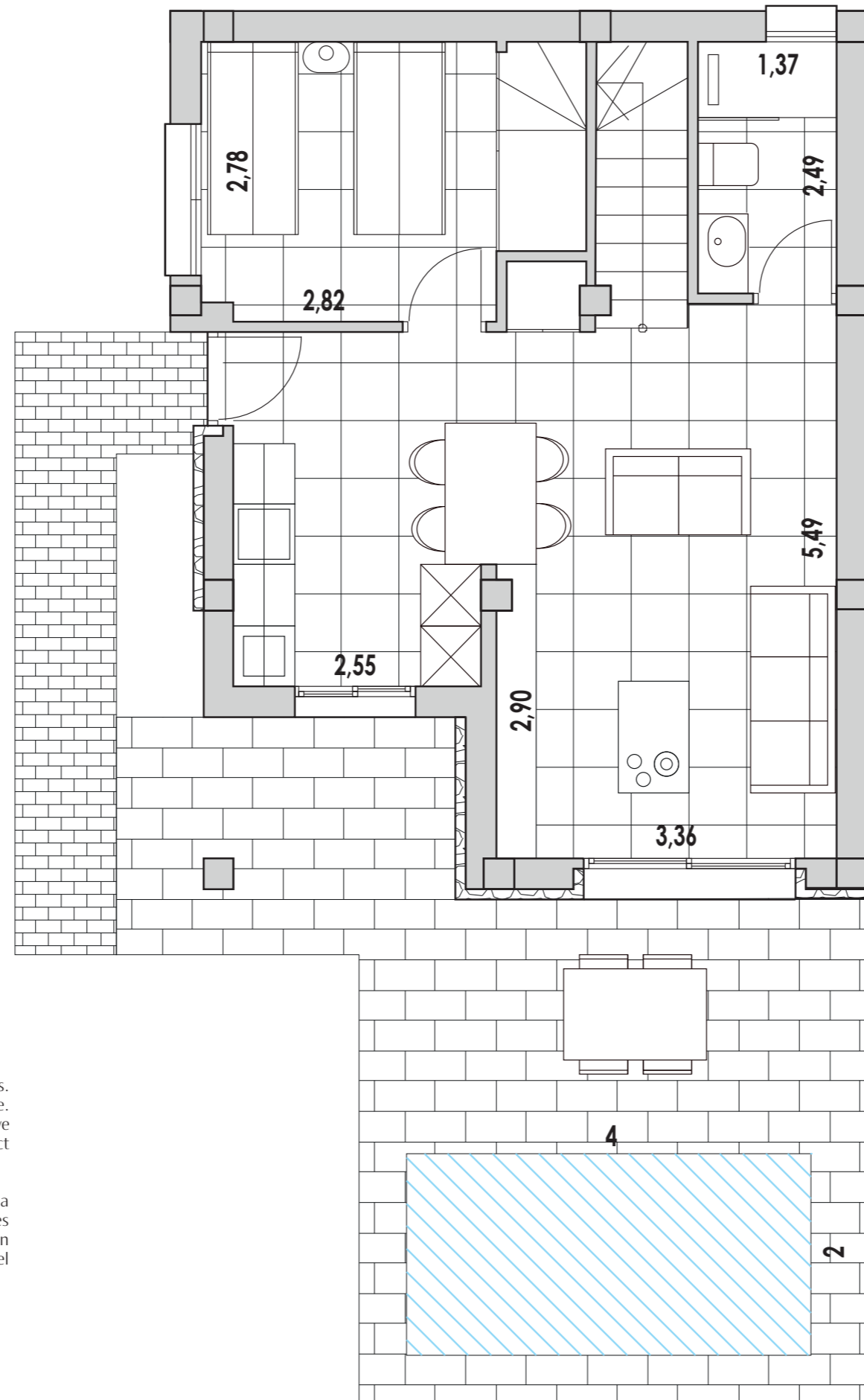
SKC	26,80	Bathroom 2	3,93
Bedroom 1	9,11	Corridor	1,60
Bedroom 2	9,45	Terrace 1	25,00
Bedroom 3	9,69	Terrace 2	15,28
Bathroom 1	3,42	Pool	8,00



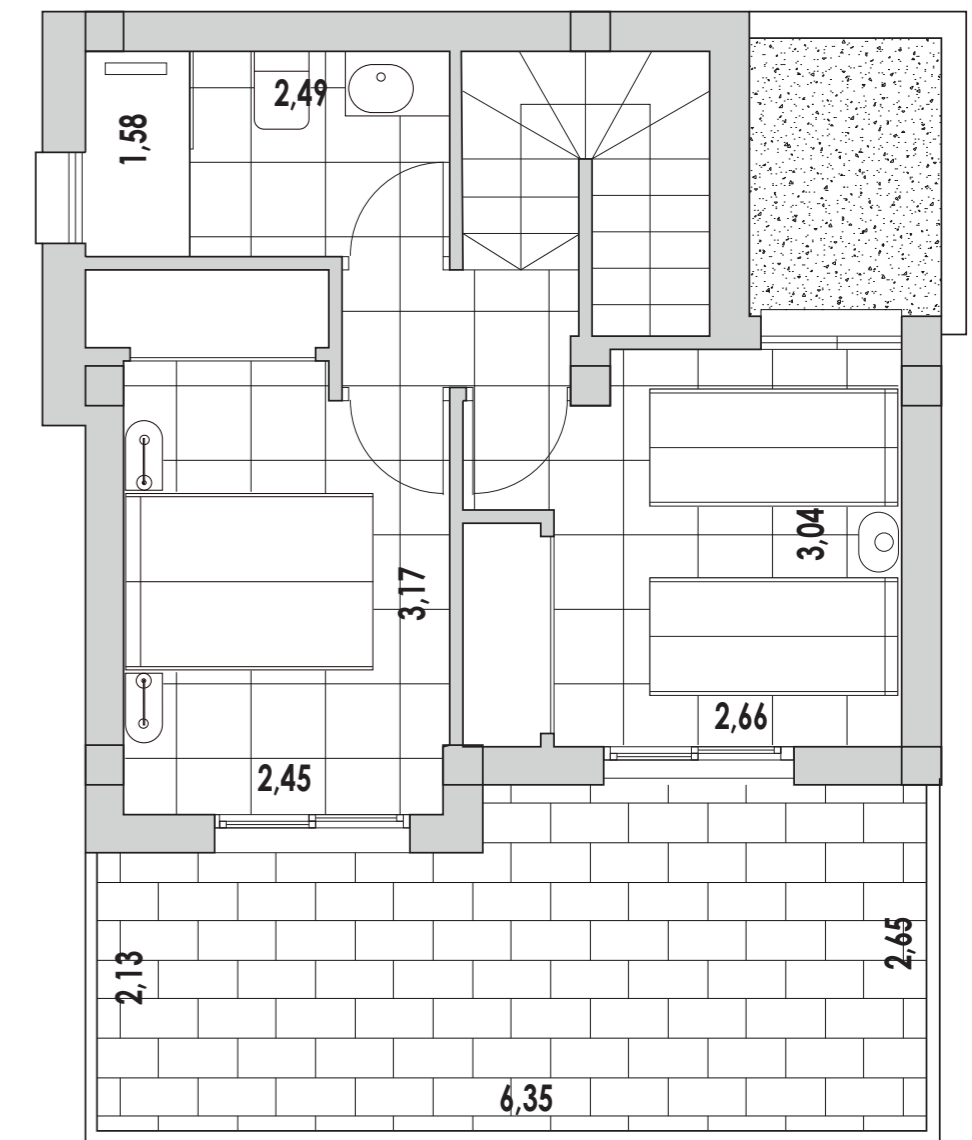
Legal Notice: Standard floor plan, which does not include the common use areas. Each residence has its own floor plan, which may vary slightly from the standard one. The furniture and household items that appear in the plan are merely for decorative purposes. This is not a contractual document. This plan can be modified by the Project Management Team according to construction or design needs.

Aviso legal: Plano estándar, que no incluye las zonas de uso común. Cada residencia tiene su propio plano, que puede variar ligeramente del estándar. Los muebles y enseres que aparecen en el plano son meramente decorativos. No se trata de un documento contractual. Este plano puede ser modificado por el equipo de gestión del proyecto en función de las necesidades de construcción o diseño.

Ground floor

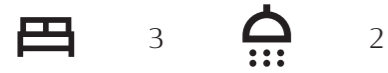


First floor



ILIOS Complex. Phase II

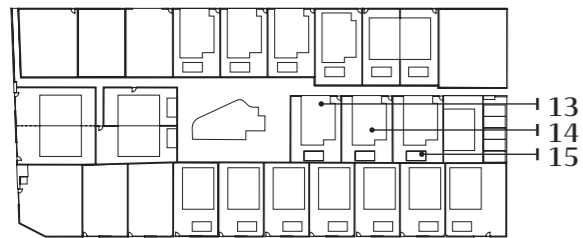
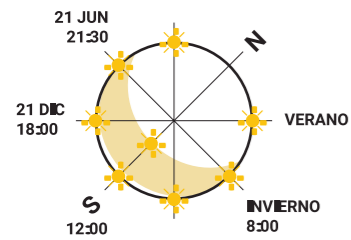
Model B (13,14,15).



Built surface 94,00 Terraces 52,90

Built areas

SKC	29,06	Corridor 1	2,03
Bedroom 1	9,33	Corridor 2	1,04
Bedroom 2	9,29	Terrace 1	27,90
Bedroom 3	12,48	Terrace 2	25,00
Bathroom 1	3,52		
Bathroom 2	4,64		

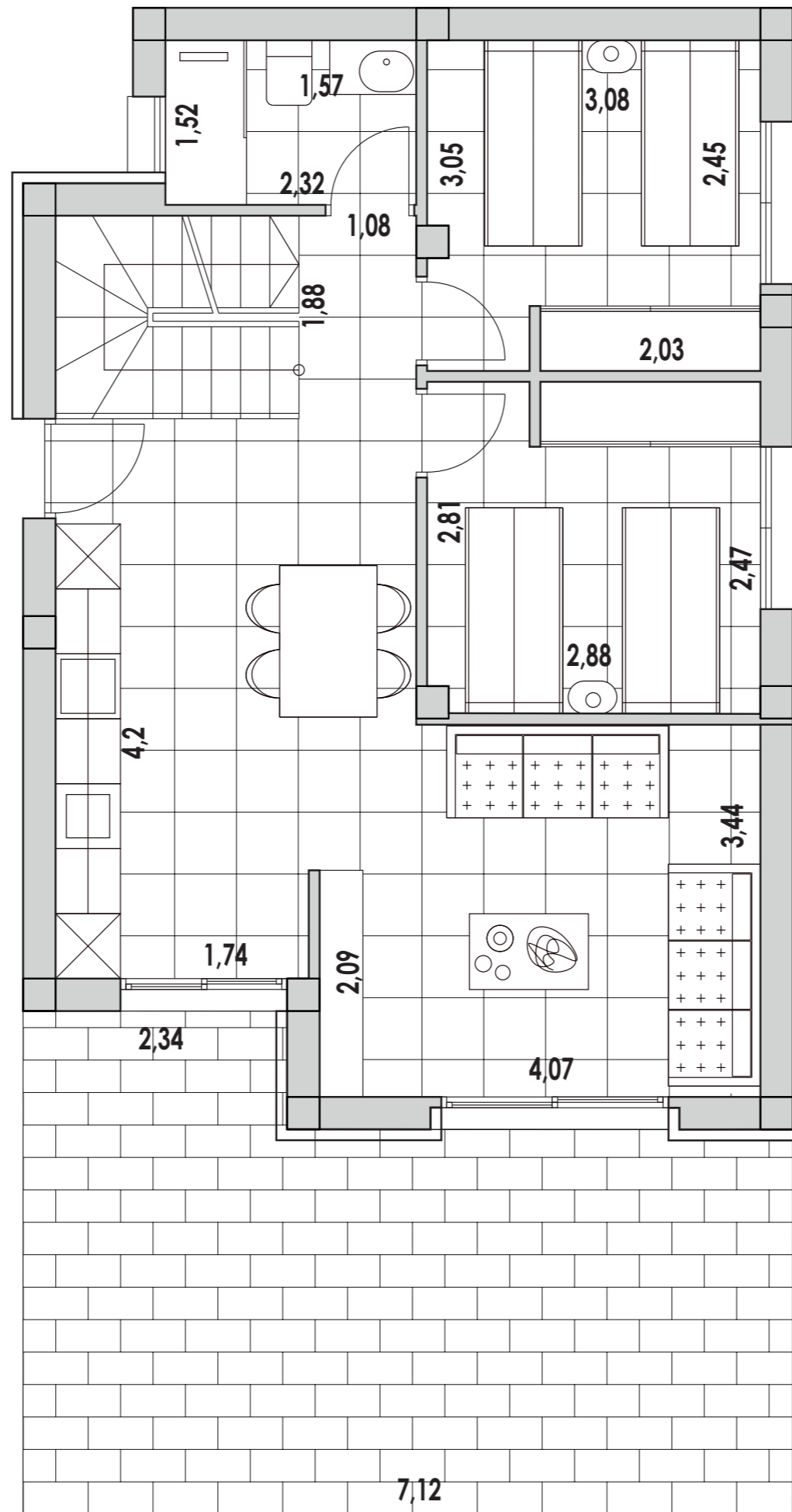


Legal Notice: Standard floor plan, which does not include the common use areas. Each residence has its own floor plan, which may vary slightly from the standard one. The furniture and household items that appear in the plan are merely for decorative purposes. This is not a contractual document. This plan can be modified by the Project Management Team according to construction or design needs.

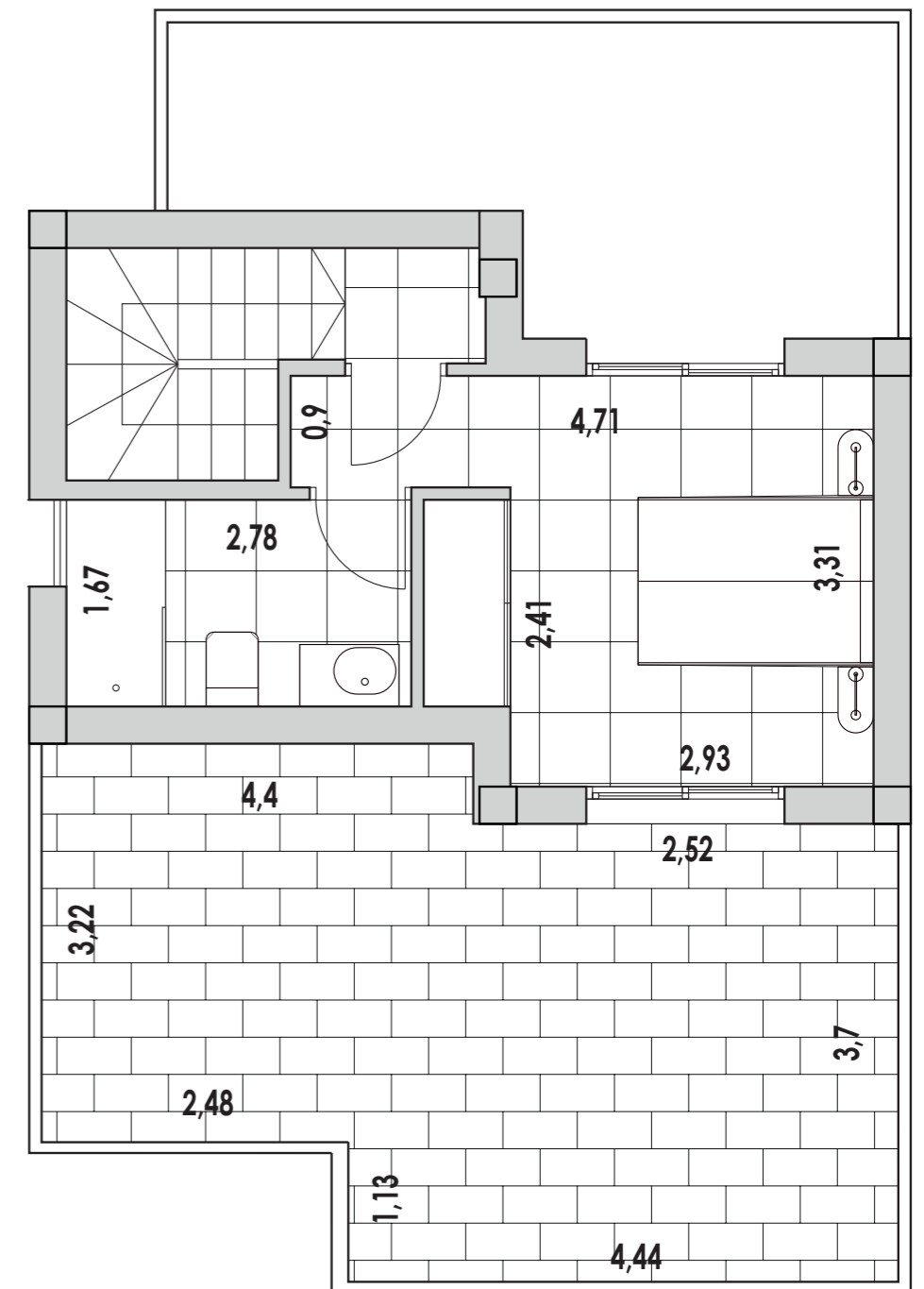
Aviso legal: Plano estándar, que no incluye las zonas de uso común. Cada residencia tiene su propio plano, que puede variar ligeramente del estándar. Los muebles y enseres que aparecen en el plano son meramente decorativos. No se trata de un documento contractual. Este plano puede ser modificado por el equipo de gestión del proyecto en función de las necesidades de construcción o diseño.

**BUILDING
YOUR TIME**

Ground floor



First floor



ILIOS Complex. Phase II

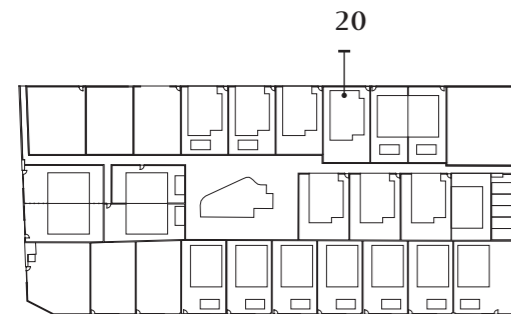
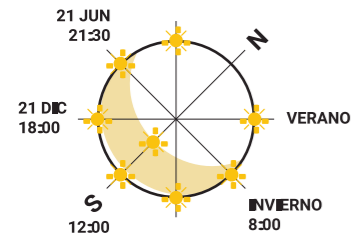
Model B - 20

 3
  2

Built surface 94,00 Terraces 65,30

Built areas

SKC	29,06	Bathroom 2	4,64
Bedroom 1	9,33	Corridor	2,03
Bedroom 2	9,29	Corridor 2	1,04
Bedroom 3	12,48	Terrace 1	40,30
Bathroom 1	3,52	Terrace 2	25,00

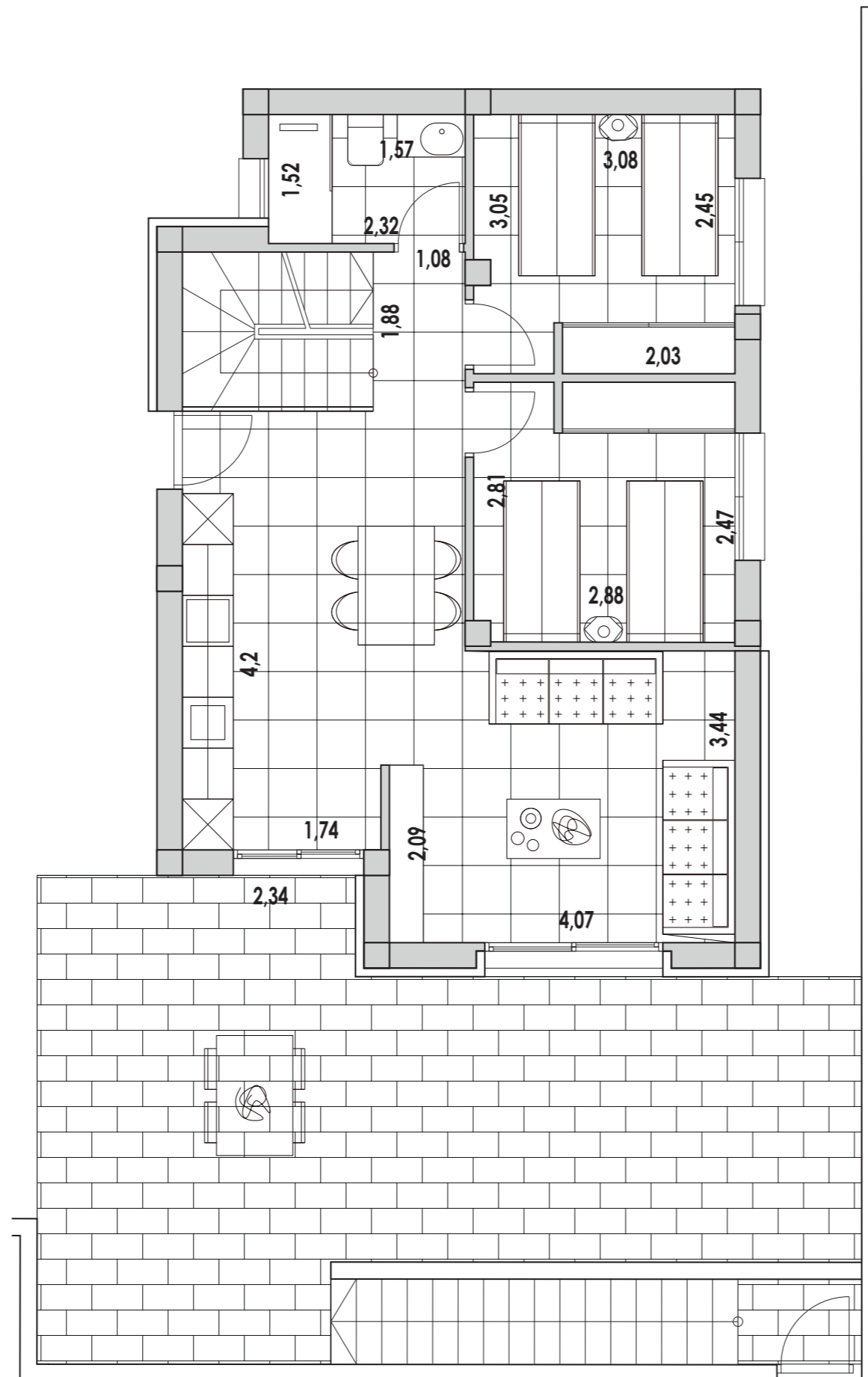


Legal Notice: Standard floor plan, which does not include the common use areas. Each residence has its own floor plan, which may vary slightly from the standard one. The furniture and household items that appear in the plan are merely for decorative purposes. This is not a contractual document. This plan can be modified by the Project Management Team according to construction or design needs.

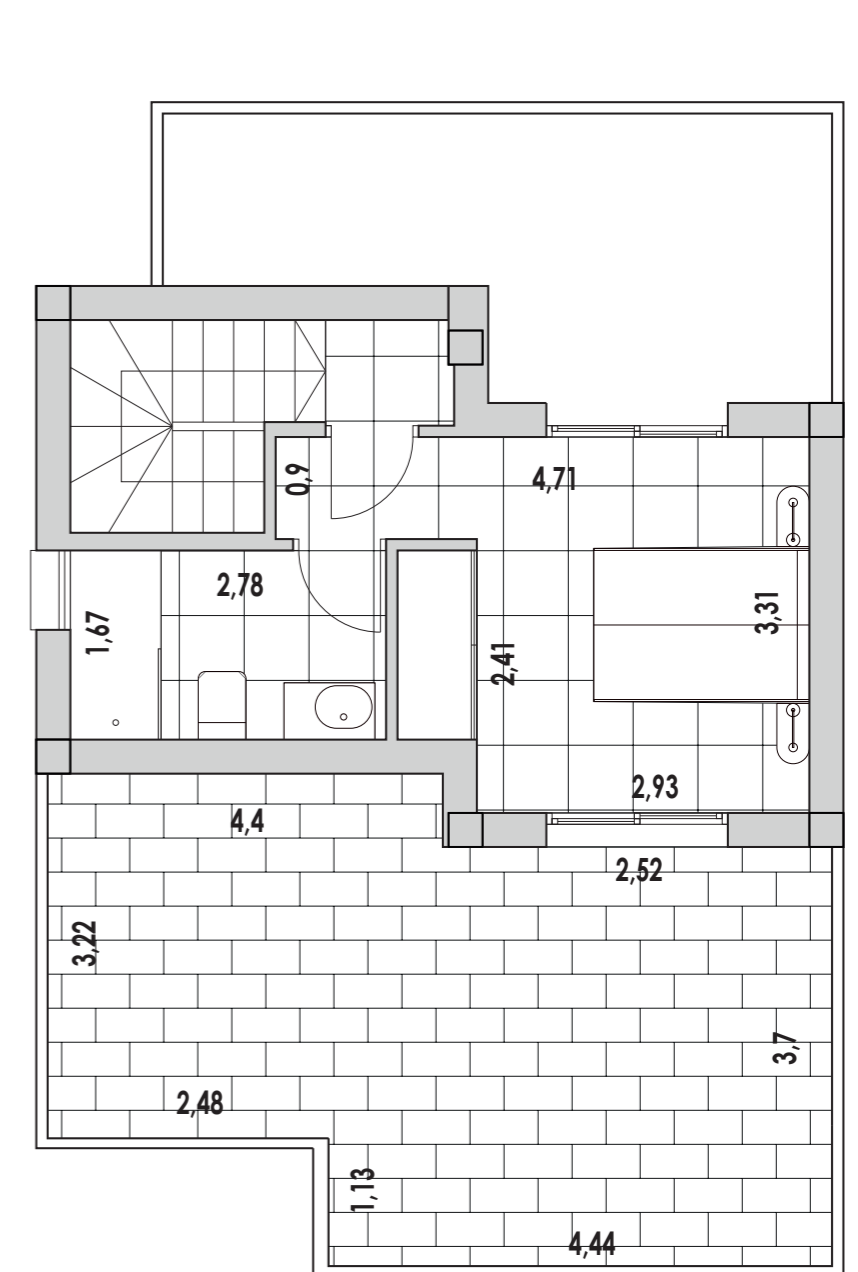
Aviso legal: Plano estándar, que no incluye las zonas de uso común. Cada residencia tiene su propio plano, que puede variar ligeramente del estándar. Los muebles y enseres que aparecen en el plano son meramente decorativos. No se trata de un documento contractual. Este plano puede ser modificado por el equipo de gestión del proyecto en función de las necesidades de construcción o diseño.

**BUILDING
YOUR TIME**

Ground floor



First floor



ILIOS Complex. Phase II

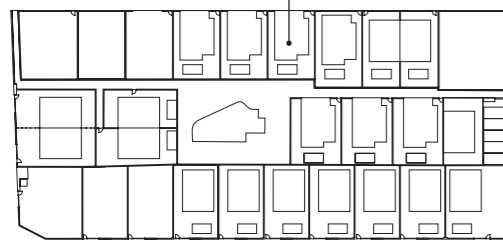
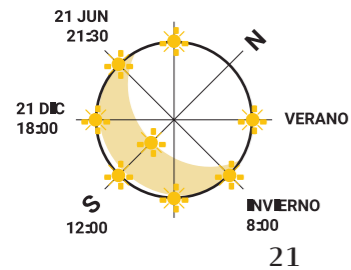
Model B - 21



Built surface 94,00 Terraces 59,10

Built areas

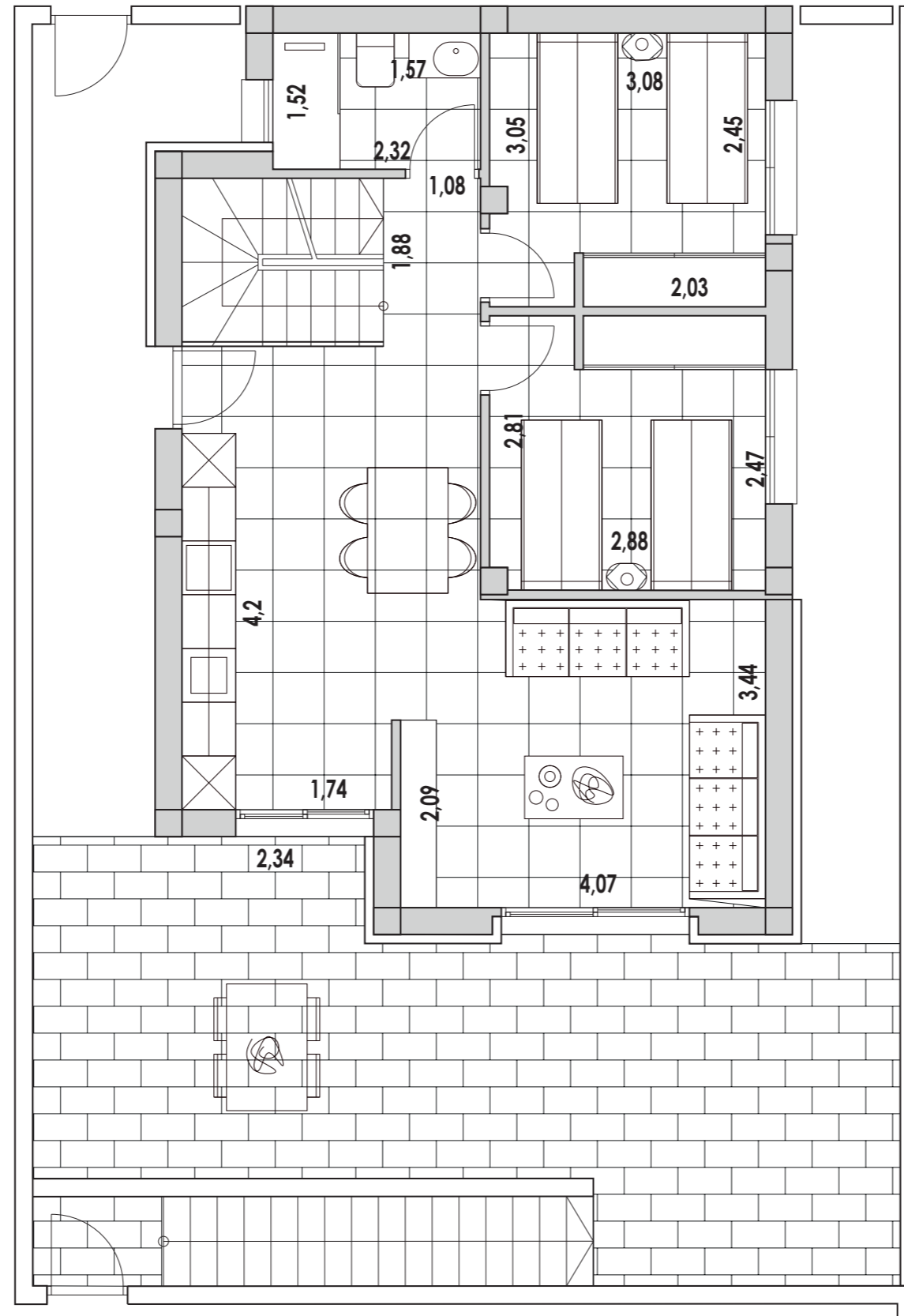
SKC	29,06	Corridor 1	2,03
Bedroom 1	9,33	Corridor 2	1,04
Bedroom 2	9,29	Terrace 1	34,10
Bedroom 3	12,48	Terrace 2	25,00
Bathroom 1	3,52		
Bathroom 2	4,64		



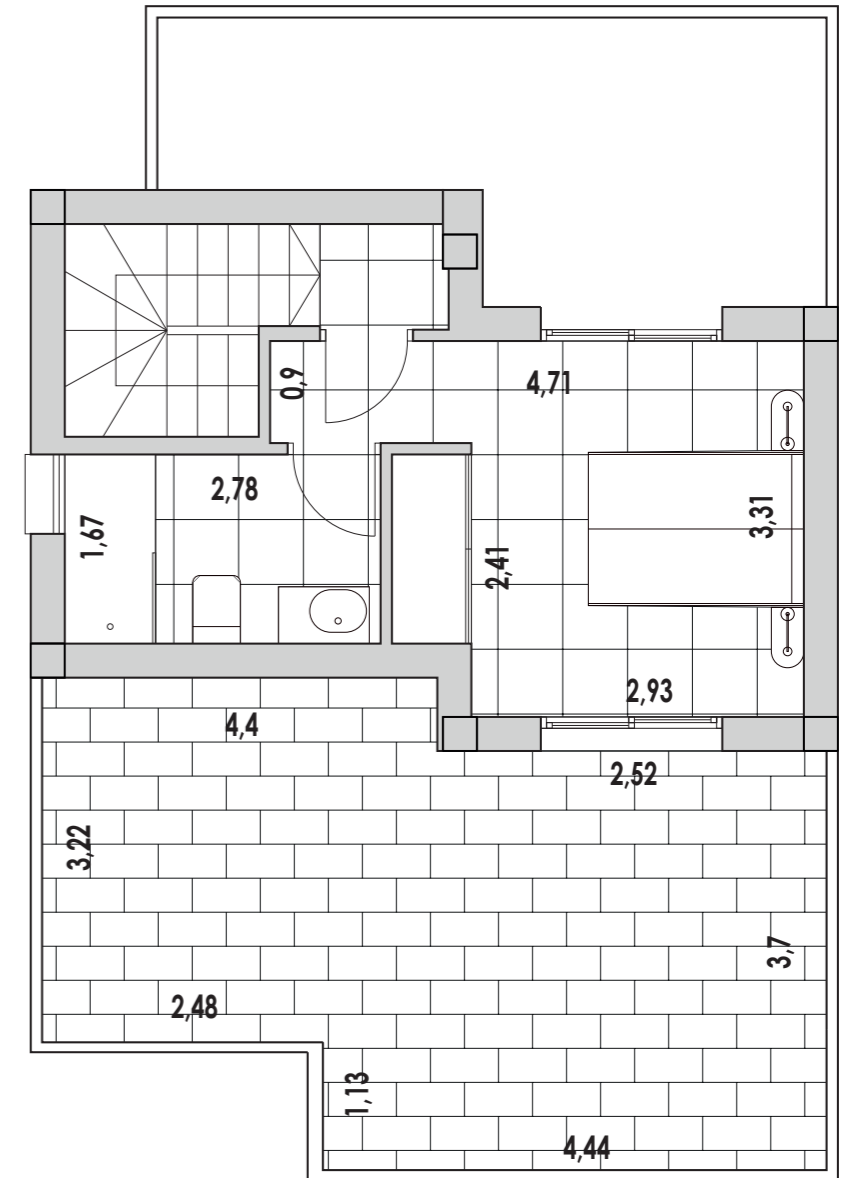
Legal Notice: Standard floor plan, which does not include the common use areas. Each residence has its own floor plan, which may vary slightly from the standard one. The furniture and household items that appear in the plan are merely for decorative purposes. This is not a contractual document. This plan can be modified by the Project Management Team according to construction or design needs.

Aviso legal: Plano estándar, que no incluye las zonas de uso común. Cada residencia tiene su propio plano, que puede variar ligeramente del estándar. Los muebles y enseres que aparecen en el plano son meramente decorativos. No se trata de un documento contractual. Este plano puede ser modificado por el equipo de gestión del proyecto en función de las necesidades de construcción o diseño.

Ground floor



First floor



ILIOS Complex. Phase II

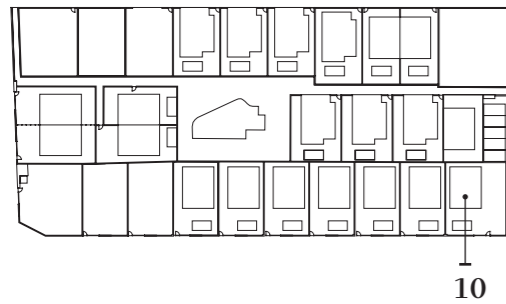
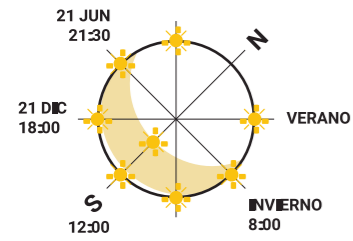
Model A (home 10).



Built surface 83,95 Terraces 40,30

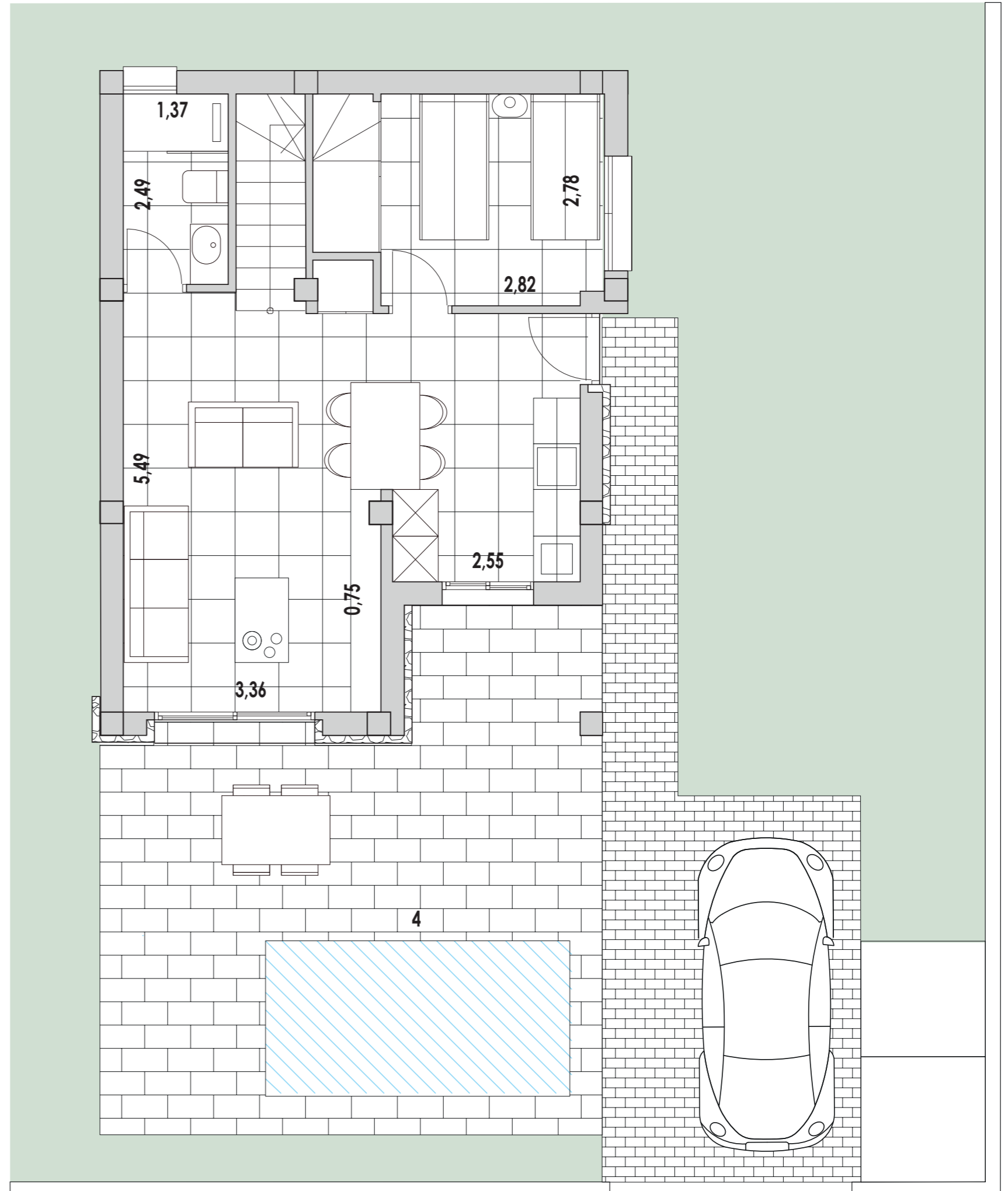
Built areas

SKC	26,80	Bathroom 2	3,93
Bedroom 1	9,11	Corridor	1,60
Bedroom 2	9,45	Terrace 1	25,00
Bedroom 3	9,69	Terrace 2	15,28
Bathroom 1	3,42	Pool	8,00







Legal Notice: Standard floor plan, which does not include the common use areas. Each residence has its own floor plan, which may vary slightly from the standard one. The furniture and household items that appear in the plan are merely for decorative purposes. This is not a contractual document. This plan can be modified by the Project Management Team according to construction or design needs.

Aviso legal: Plano estándar, que no incluye las zonas de uso común. Cada residencia tiene su propio plano, que puede variar ligeramente del estándar. Los muebles y enseres que aparecen en el plano son meramente decorativos. No se trata de un documento contractual. Este plano puede ser modificado por el equipo de gestión del proyecto en función de las necesidades de construcción o diseño.



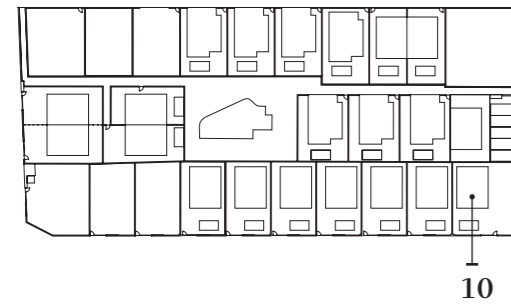
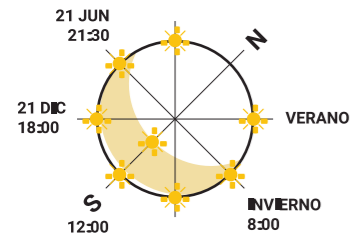
ILIOS Complex. Phase II

Model A (home 10).

	3		2		
Built surface	83,95	Terraces	40,30		

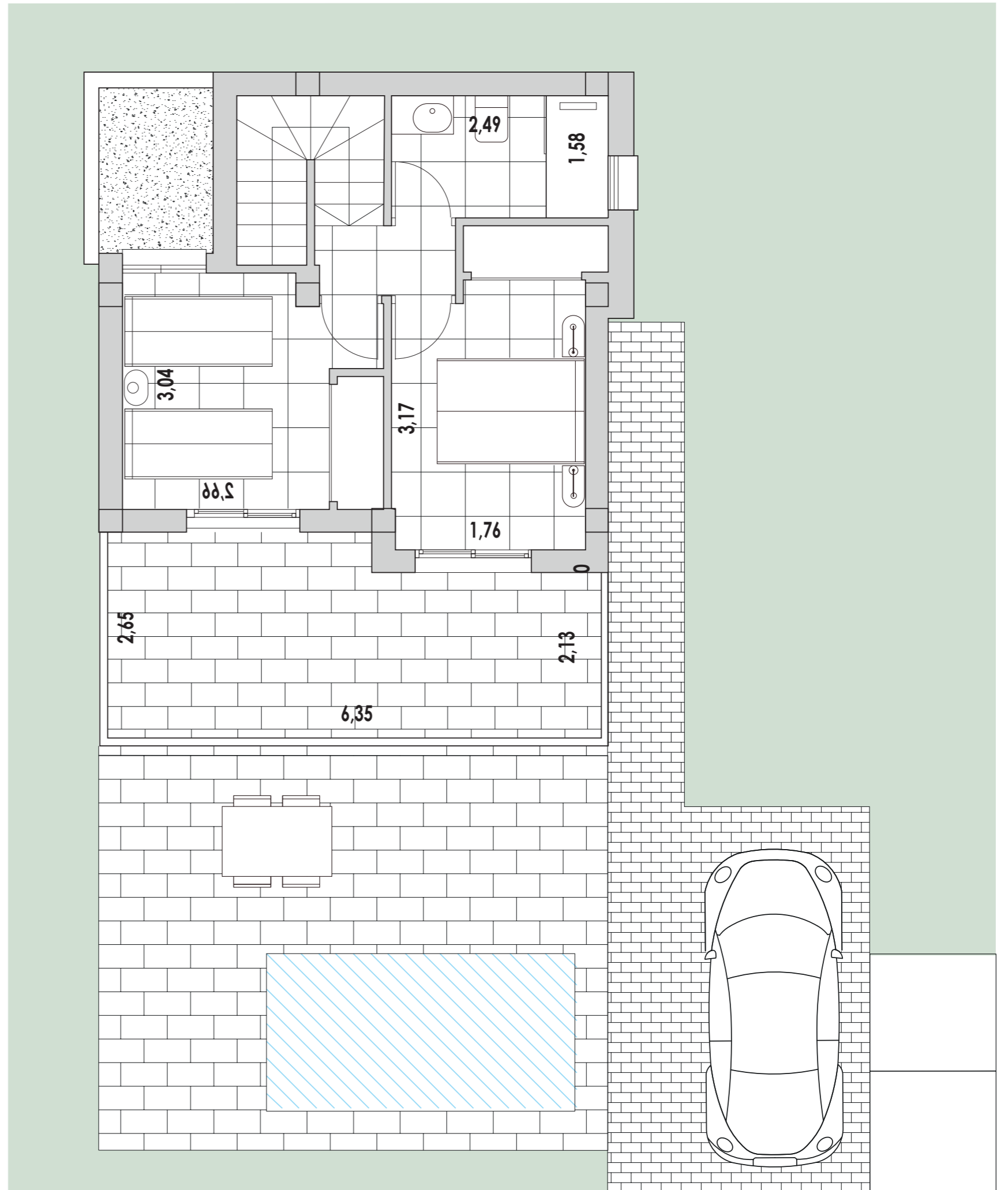
Built areas

SKC	26,80	Bathroom 2	3,93
Bedroom 1	9,11	Corridor	1,60
Bedroom 2	9,45	Terrace 1	25,00
Bedroom 3	9,69	Terrace 2	15,28
Bathroom 1	3,42	Pool	8,00






Legal Notice: Standard floor plan, which does not include the common use areas. Each residence has its own floor plan, which may vary slightly from the standard one. The furniture and household items that appear in the plan are merely for decorative purposes. This is not a contractual document. This plan can be modified by the Project Management Team according to construction or design needs.

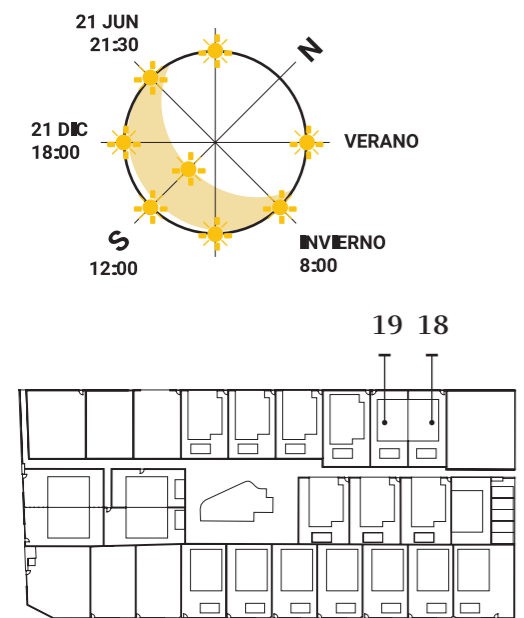
Aviso legal: Plano estándar, que no incluye las zonas de uso común. Cada residencia tiene su propio plano, que puede variar ligeramente del estándar. Los muebles y enseres que aparecen en el plano son meramente decorativos. No se trata de un documento contractual. Este plano puede ser modificado por el equipo de gestión del proyecto en función de las necesidades de construcción o diseño.



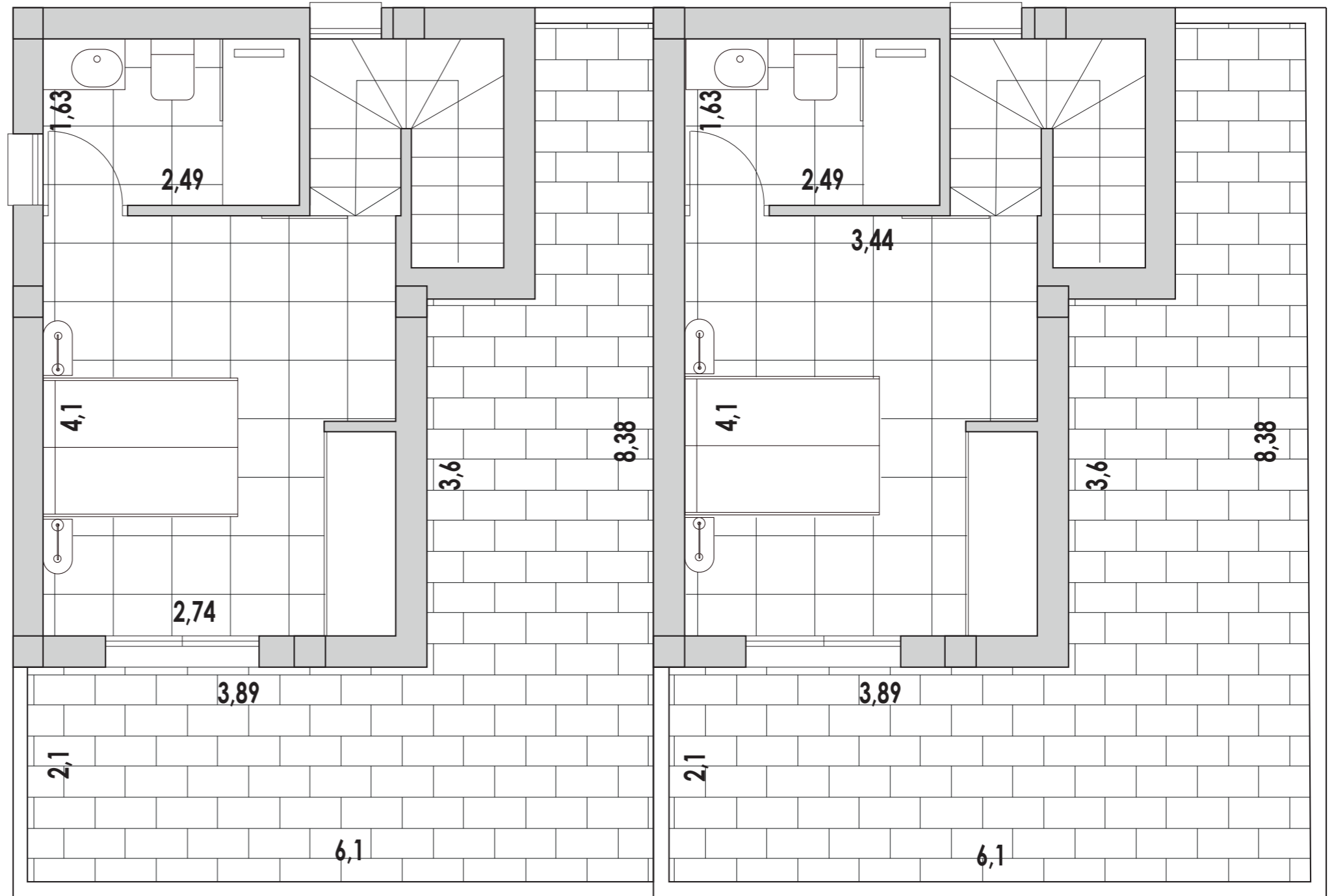
ILIOS Complex. Phase II

Model A Attached (18-19).

	2		2		
Built surface	79,07	Terraces	37,60		
Built areas					
SKC	26,80	Bathroom 2	4,05		
Bedroom 1	9,11	Terrace 1	12,60		
Bedroom 2	14,12	Terrace 2	25,00		
Bathroom 1	3,42	Pool	8,00		



First floor



Legal Notice: Standard floor plan, which does not include the common use areas. Each residence has its own floor plan, which may vary slightly from the standard one. The furniture and household items that appear in the plan are merely for decorative purposes. This is not a contractual document. This plan can be modified by the Project Management Team according to construction or design needs.

Aviso legal: Plano estándar, que no incluye las zonas de uso común. Cada residencia tiene su propio plano, que puede variar ligeramente del estándar. Los muebles y enseres que aparecen en el plano son meramente decorativos. No se trata de un documento contractual. Este plano puede ser modificado por el equipo de gestión del proyecto en función de las necesidades de construcción o diseño.